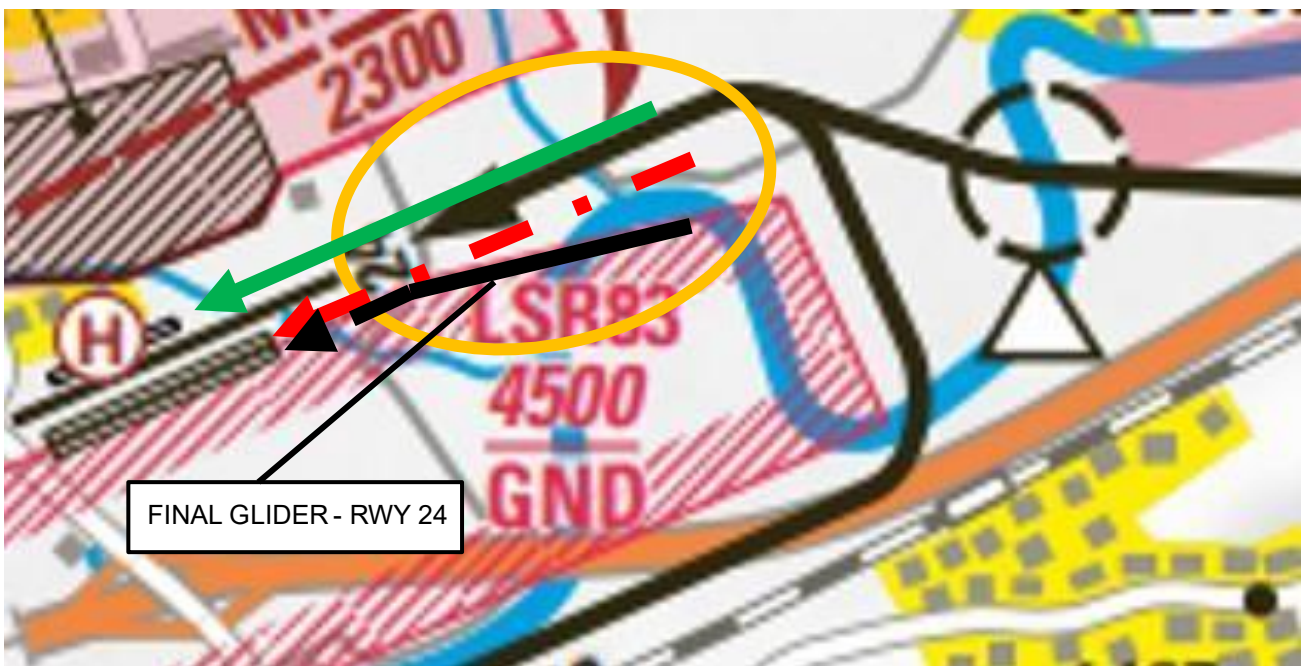


PILOTS!

CAUTION - HOT SPOT: FINAL RWY'S 24 WHEN LSR83 ACTIV

TO AVOID CLOSE ENCOUNTERS OR PARALLEL SIMULTANEOUS OPERATIONS ON RWY 24L AND GLIDER RUNWAY: PILOTS PREFERING TO USE GRASRUNWAYS SHALL AIM FOR GRASRUNWAY 24R INSTEAD OF RWY24L, WHENEVER POSSIBLE.



LSR83 is activated and broadcasted via ATIS, when numerous glider operations are planned.
LSR83 must be avoided at all times by all non-participating aircraft.
LSR83 is autonomously operated by the glider organisations on separate frequency and authority, coordinated with ATC.

For the sake of safety, thank you very much for your cooperation.

Airport Grenchen
Safety Management