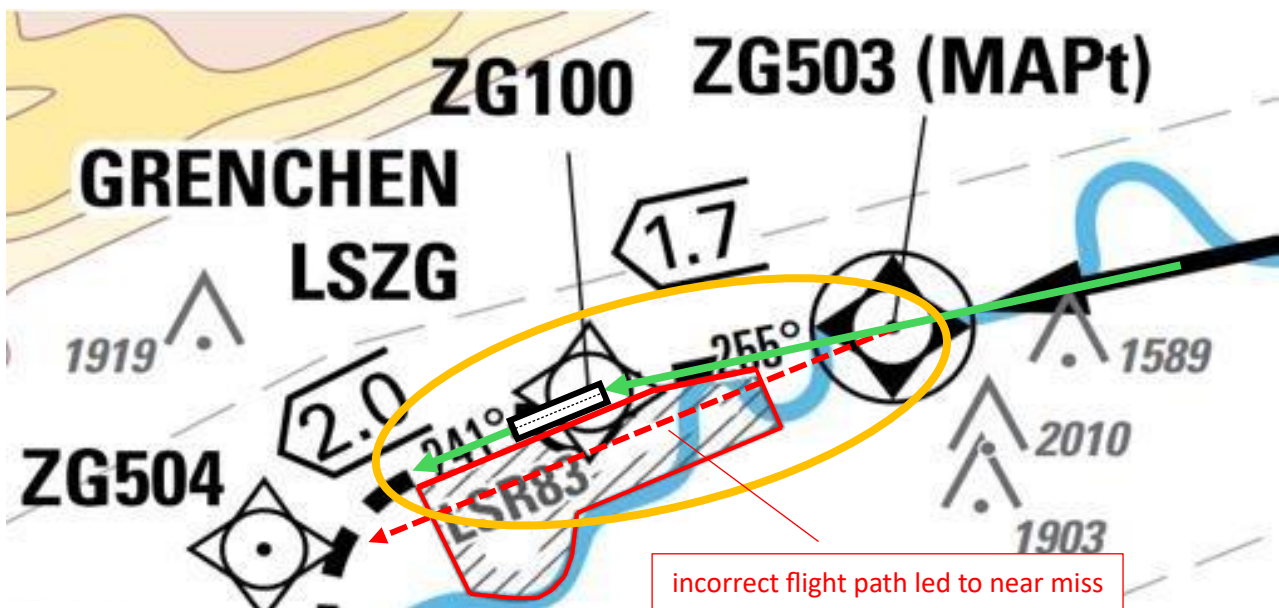


PILOTS!

CAUTION - HOT SPOT:
RNP24 MISSED APPROACH WHEN LSR83
ACTIV

LSR83 MUST BE AVOIDED AT ALL TIMES BY IFR-TRAFFIC.
IFR-TRAFFIC PERFORMING THE MISSED APPROACH
PROCEDURE MUST REMAIN CLEAR OF LSR83



LSR83 is activated in VMC conditions only and broadcasted via ATIS, when numerous glider operations are planned.

LSR83 is autonomously operated by the glider organisations on separate frequency and authority, coordinated with ATC.

If you are obliged to fly a missed approach you must navigate around LSR83 as displayed by the green arrows, you must look out, you are in mixed airspace D: no separation is provided between IFR- and VFR-Traffic, you must avoid LSR83

IFR Flight Instructors: If your student is on instruments, you must make sure that the correct flight track is kept, according to the drawing above!

For the sake of safety, thank you very much for your cooperation.